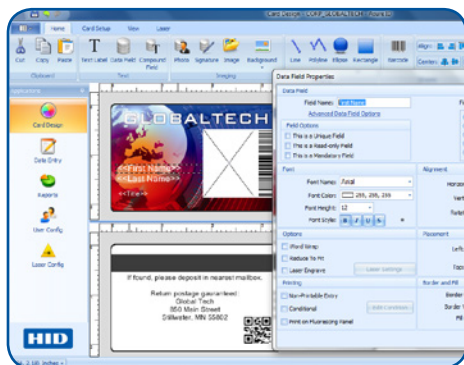




Asure ID® Card Personalization Software

ENTERPRISE



ASURE ID® 7 IS HERE.

- **Friendly and Intuitive Interface** – Enhanced user experience makes photo ID card design and data entry a breeze.
- **Choose Your Source** – Easily print cards from records stored in Asure ID's internal database. Or with our real-time data exchange feature Live Link, you can share across multiple workstations directly from your network's HR, security or ERP database.
- **Customized Reporting, Securely Delivered** – In addition to standard ready-to-view reports, manipulating data with filtering, sorting and grouping has never been easier to configure and save in a custom report. With definable reporting privileges extended to application-wide password protection, Asure ID Enterprise enhances your ID data security.

Tools at your fingertips

- Multi-task with tabbed navigation, and effortlessly switch between card design and data entry, managing each independently.
- The toolbar puts frequently used elements into logical order.
- De-clutter the workspace by hiding colors and attributes until they're needed, using pop-out control palettes.
- "What You See Is What You Get" display helps ensure accurate card design by showing exactly how a card will print, including data place-holders.

Productivity has never looked better.

Asure ID offers much more than good looks, it provides a dramatic speed boost. Everything you need to design and populate a card is right in front of you in a crisp, clean environment that allows the user to glide from data entry to card design to printing and reporting.

Everyday work made effortless.

Routine tasks can be performed with a couple of mouse clicks. It's a snap to capture or load a photo, void a card or set the print counter. And you can populate card data fields directly from the internal Microsoft® Access® database. These and other frequently-used features are within easy reach on the Microsoft "ribbon"-inspired toolbar.

Standard features:

Asure ID "remembers" with automatic start-up loading of the last template and report used.

Quick Filter wildcard search on any field in the database. **Global Find** extends this convenience across all linked databases and templates.

Additional features:

SIF Agent optional add-on enables Asure ID Enterprise to meet the Schools Interoperability Framework (SIF) standard, allowing consistent data sharing and elimination of double data entry and inconsistencies across other SIF-compliant schools and districts.

Asure ID Enterprise expands **database connectivity** and networking for enterprise class card issuance with support for Microsoft Access and SQL databases and ODBC import. When your needs grow to include technology card support, simply upgrade to Asure ID Exchange to add features and functionality.

Simply intuitive.

For all its power and convenience, the most surprising part of Asure ID is its intuitive nature. Tools and processes have been so carefully designed that it seems to anticipate what you need next.

Asure ID takes ID card personalization to the next level by making users more productive. Ask your HID Global dealer. Or visit hidglobal.com/idsoftware.

SPECIFICATIONS



GENERAL	SOLO	EXPRESS	ENTERPRISE	EXCHANGE
Operating System Support: Windows® XP/Vista®/7/8 including Windows 8 Pro Tablets	■	■	■	■
Language support: English, French, German, Spanish, Russian, Portuguese (Brazil), Simplified Chinese, Thai, Indonesian, Arabic, Turkish, & Czech	■	■	■	■
Microsoft® Access® (2000 & 2003)	Native	Native / Live Link	Native / Live Link	Native / Live Link
Password Log-on with Definable User Privileges		■	■	■
Microsoft® SQL Server® (2000, 2005 & 2008)			Native / Live Link	Native / Live Link
DVTEL®			■	■
Networkable®			■	■
MySQL® (Version 5)				Live Link
Oracle® (9i & 11g)				Native / Live Link
Microsoft Active Directory/LDAP				■
CARD DESIGN				
Dual-sided Template Designs	■	■	■	■
Add Text Field (Variable & Static)	■	■	■	■
Add Photo Fields	■	■	■	■
Import Images (e.g., Logos & Graphics)	■	■	■	■
Add a Linear Barcode	■	■	■	■
Add Magnetic Stripe	■	■	■	■
Fluorescing Panel (F-Panel) Support	■	■	■	■
Various Card Sizes	CR-80 Only	■	■	■
Add Data Fields	8	Unlimited	Unlimited	Unlimited
Add Compound Data Field		■	■	■
Add Signatures		■	■	■
Add 2D Barcodes (PDF417, QR Code, & Datastripe)		■	■	■
Set Conditional Design and Print Rules		■	■	■
Smart Card Encoding and Management (iDIRECTOR)¹				■
Program Access Control Credentials (i.e. iCLASS SE)				■⁷
Add Laser Engraved Text, Data and Photo Fields				■²
DATA ENTRY				
Integrated Photo Capture (TWAIN, DirectShow® & WIA)	■	■	■	■
Save and Search Records	200	■³	Unlimited	Unlimited
Global Find		■	■	■
Integrated Signature Capture		■	■	■
Batch and Sheet Printing		■	■	■
Reports (Standard & Custom)		■	■	■
Export Reports		■	■	■
ODBC Import/Export		Import	■	■
Live Link (Real-time Data Exchange)⁴		Single DB/Single Table	Single DB/ Multi-Table	Multi-DB/ Multi-Table
Database View Connectivity			■	■
SIF (Student Interoperability Framework) Agent			Optional⁵	Optional⁵
Educational import / Export (Student Photo CD)⁵			Optional⁵	Optional⁵
ASURE ID PROTECT PLANS				
Free Updates	■	■	■	■
Annual / Multi-Year Support Packages	Optional	Optional	Optional	Optional

¹ Manage and control card access formats, smart cards and card applications.

² Available when used with FARGO® HDP8500LE.

³ Storage limitations based on MS Access.

⁴ Bi-directional data exchange with third party databases and applications.

⁵ Additional purchase.

⁶ Asure ID site licenses enable sharing of networked database information on multiple workstations.

⁷ iCLASS® Standard/SE/SR/Seos, MIFARE DESFire® EV1, HID Prox.

ASURE ID® MEETS THE CARD APPLICATION NEEDS OF:

- Large Corporate ID
- National ID
- Driver's Licenses
- Government/Military
- State & Local Government
- Healthcare
- Universities
- Events



Supports
Windows 8 Pro Tablets

HID GLOBAL IS THE LEADER IN SOLUTIONS FOR THE DELIVERY OF SECURE IDENTITY.

Asure ID is just one part of a complete, integrated system for the issuance, management and authentication of secure IDs. Your HID Global dealer can custom design a secure identity system using proven HID components including:

- FARGO® ID Card Printer/Encoders
- Cards, ribbons, films and overlaminates
- ID card production services
- HID contact and contactless card readers, including iCLASS® smart card readers

The suggested minimal system requirements for Asure ID 7 are:

- 1 gigahertz (GHz) or faster processor
- 1 gigabyte (GB) RAM
- 1 GB available hard disk space

Free trial download
is available from:

hidglobal.com/asureid

IDWholesaler
We know ID. It's what we do.

www.IDWholesaler.com
(800) 321-4405 x2

Shop Now ▶

ASSA ABLOY

An ASSA ABLOY Group brand

© 2013 HID Global Corporation/ASSA ABLOY AB. All rights reserved. HID, HID Global, the HID Blue Brick logo, the Chain Design, Asure ID and FARGO are trademarks or registered trademarks of HID Global or its licensor(s)/supplier(s) in the US and other countries and may not be used without permission. All other trademarks, service marks, and product or service names are trademarks or registered trademarks of their respective owners. 2013-10-08-hid-asureid-enterprise-software-ds-en PLT-00003

