

***EDIs*ecure®**

## **ILM-DS Monitor Tool for XID 93xx Retransfer Printers**

### **User Manual**

- Thank for purchasing this product.
- Please read this manual carefully before use to ensure correct operation.  
After reading, retain this manual carefully for future reference.

### **Notes about this manual**

- (1) This manual and the software described in it are copyrighted  
© 2010-2011 Digital Identification Solutions Group. All rights reserved.  
*EDIssecure*<sup>®</sup> and *IDExpert*<sup>®</sup> are registered trademarks of Digital Identification Solutions AG.  
All other trademarks and service marks are the property of their respective owners.  
Unauthorized reproduction and use of this manual is strictly prohibited.
- (2) Details of this manual or printer specifications and appearance are subject to changes without prior notice.
- (3) Illustrations used in this manual may differ slightly from the actual product.
- (4) Microsoft and Windows are either registered trademarks or trademarks of Microsoft Corporation in the United States and/or other countries. Microsoft<sup>®</sup> Windows<sup>®</sup> 7 operating system, Microsoft<sup>®</sup> Windows Vista<sup>™</sup> operating system and Microsoft<sup>®</sup> Windows<sup>®</sup> XP operating system are represented as Windows<sup>®</sup> 7, Windows Vista<sup>™</sup> and Windows<sup>®</sup> XP respectively in this manual.

### **Operating Environment**

This software runs on the following systems.

Microsoft<sup>®</sup> Windows<sup>®</sup> 7 32bit

Microsoft<sup>®</sup> Windows Vista<sup>™</sup> 32bit

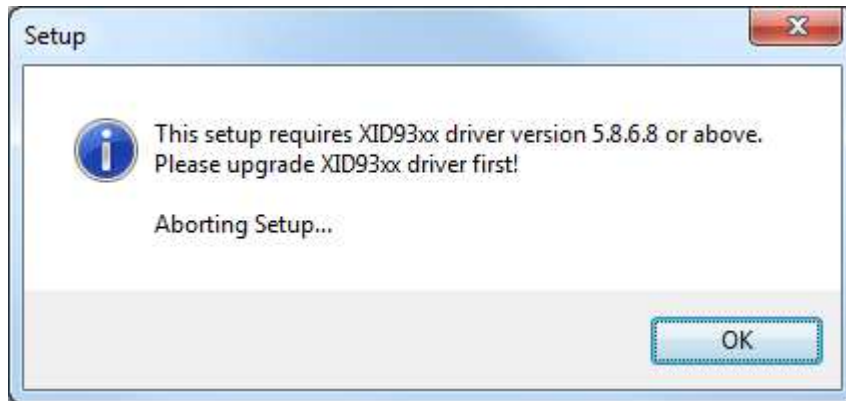
Microsoft<sup>®</sup> Windows<sup>®</sup> XP 32bit (Service Pack 2)

## Table of Contents

1 Installation Process .....	4
1.1 Installation .....	4
1.2 Deinstallation .....	8
2 Administration Center .....	9
2.1 ILM-DS Settings .....	10
2.2 ILM-DS Lock .....	12
2.3 ILM-DS Service Settings .....	13
2.4 Firmware Update .....	15
3 Monitor Tool .....	19
3.1 Settings of the Monitor Tool .....	20
4 Print and lamination process .....	21
4.1 Specification .....	21
4.2 Hardware scheme .....	21

## 1 Installation Process

Please note that you should have installed the XID 93xx Printer Driver version 5.8.6.8 or higher for a successful installation of the ILM DS Monitor Tool for XID 93xx printers. In case you have a previous version installed the following screen appears.

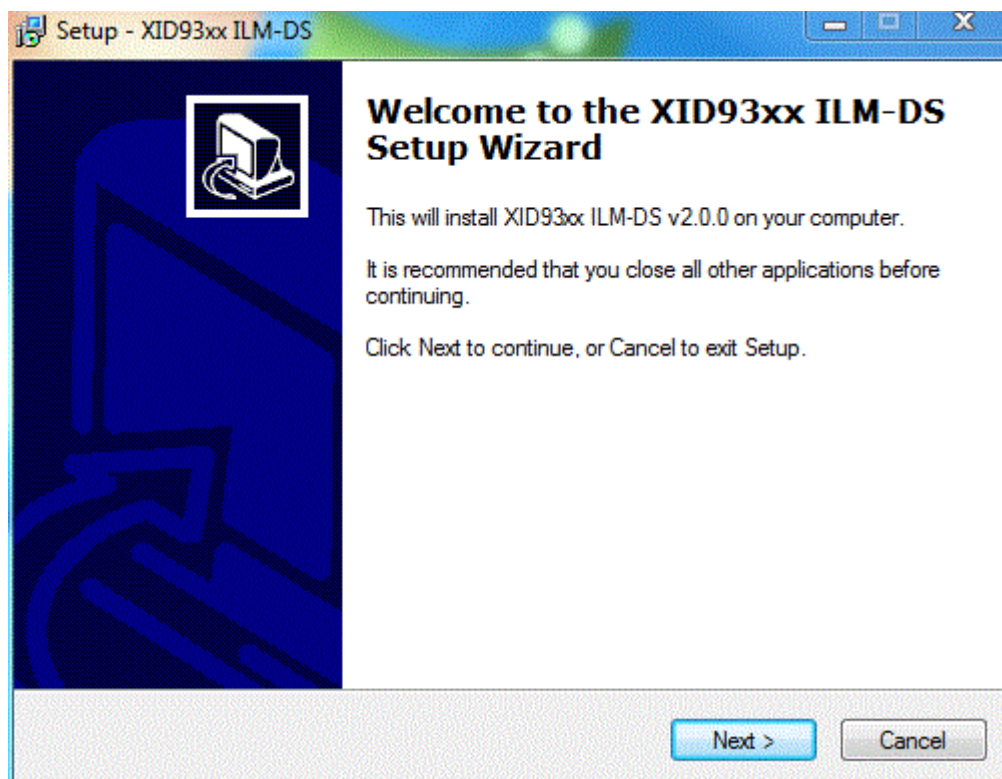


Click on the ok button here and install the XID 93xx Printer driver version 5.8.6.8, for details please refer to the XID 93xx Printer driver manual.

### 1.1 Installation

Using the installer (automatic execution program) enables easy installation of the software. Start up Windows, and set the supplied CD-ROM into the computer.

After successful access on the installation file the following screen with the XID 93xx ILM-DS Setup Wizard appears:





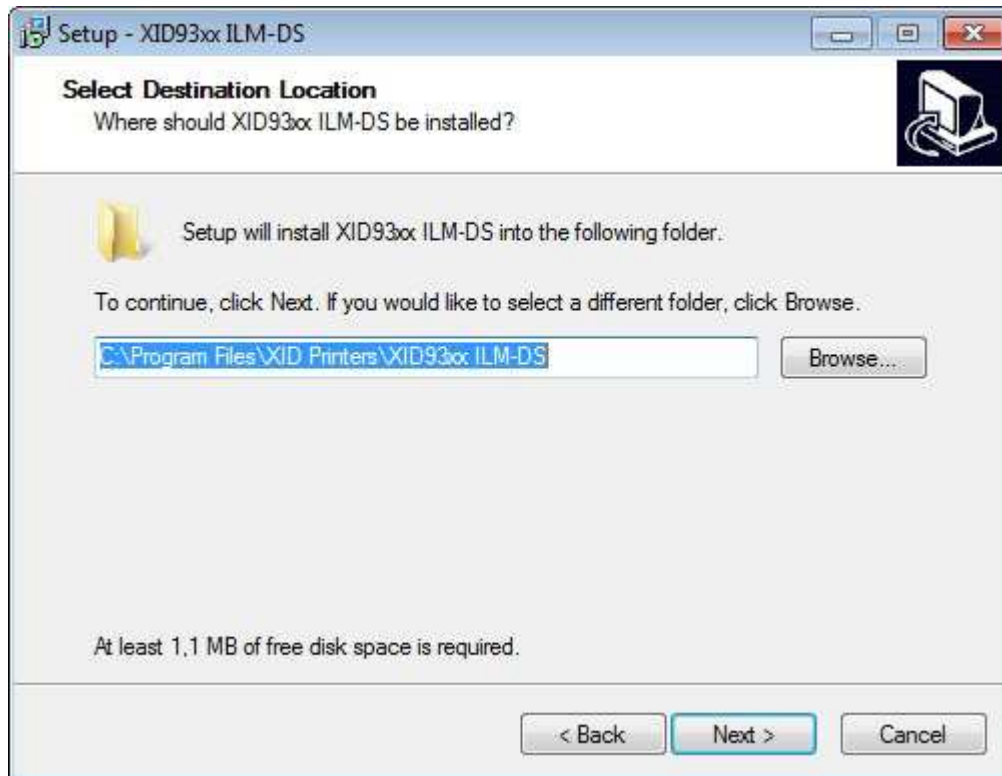
Please click "Next" to continue the installation routine.

**Memo:**

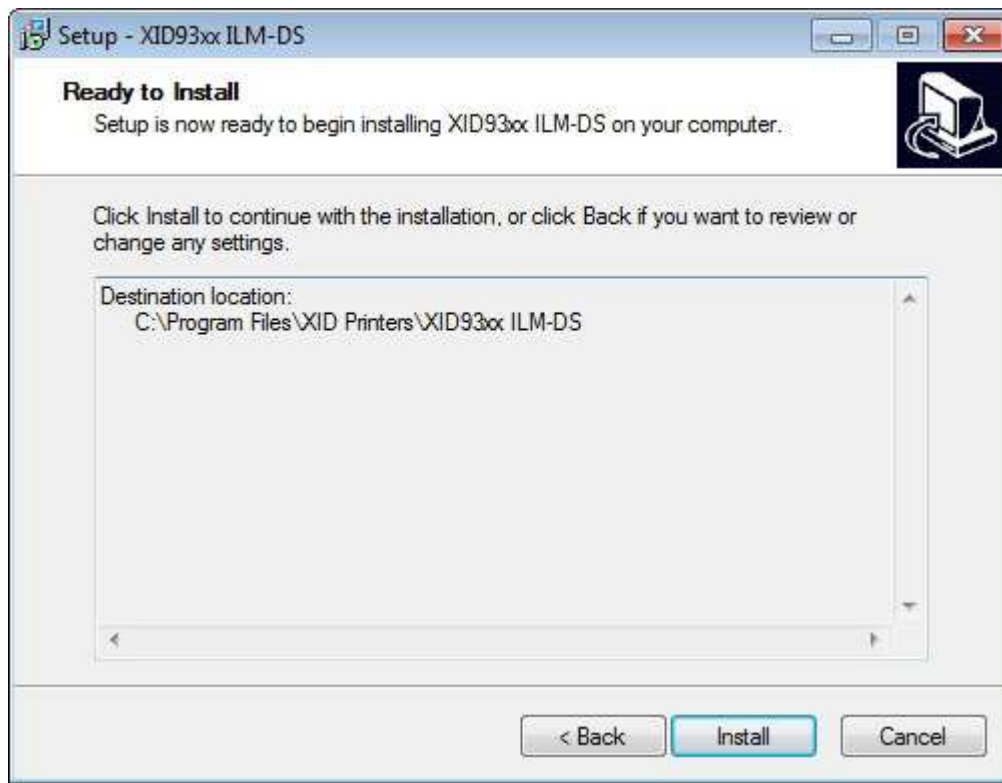
If the CD-ROM drive of the computer is set to run automatically, the installer will be executed automatically.

If the installer is not automatically initiated, double-click "SETUP.exe" in the CD-ROM.

The next screen asks you to define an installation folder for the Monitoring tool. Either accept the suggested installation folder or please browse on your PC for your preferred memory location. Then click "Next" to continue.



The next Window shows your selected destination location for the program and offers the option for changes with the button “Back”. Please click “Install” to continue.

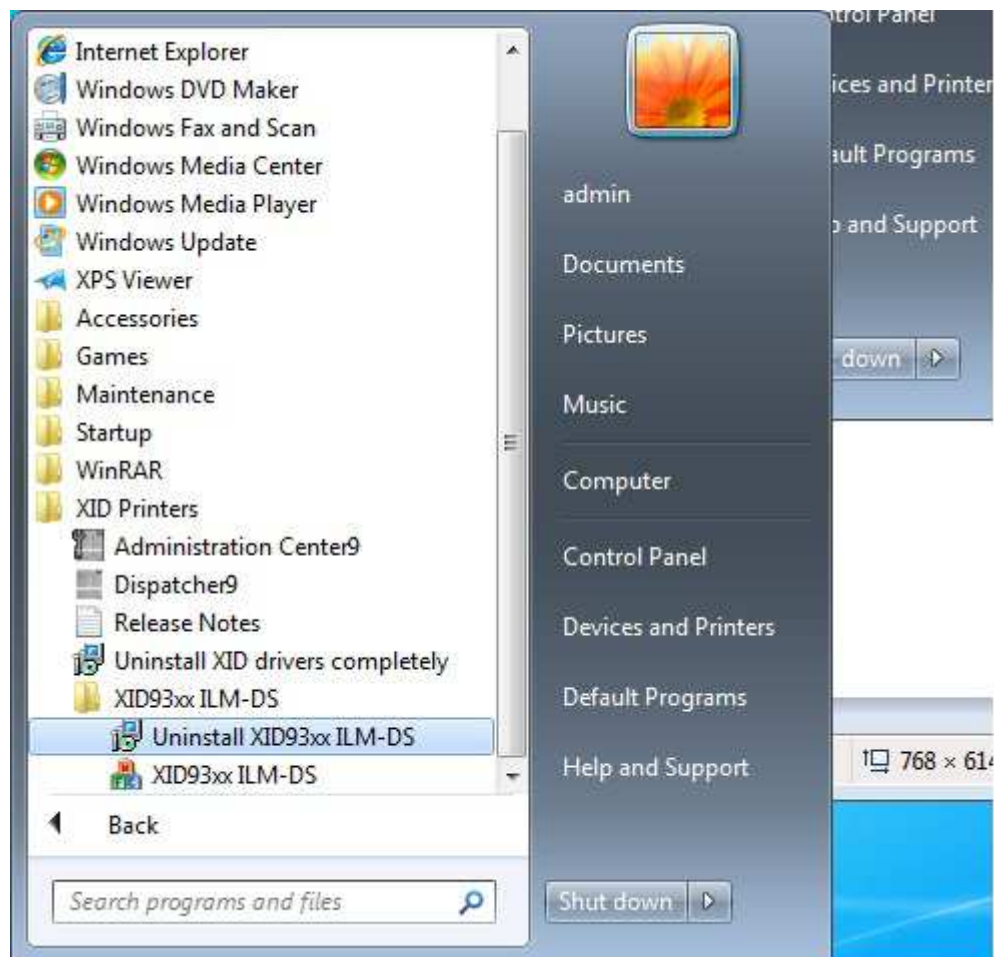


By now you are nearly through the installation routine, please click “Finish” in the last screen to complete the installation process.



## 1.2 Deinstallation

For the deinstallation of the Monitor Tool please click on start, choose the folder “XID printers”, then choose the folder “XID93xx ILM-DS” and double-click the option “Uninstall XID93xx ILM-DS”. The deinstallation routine will take place immediately.

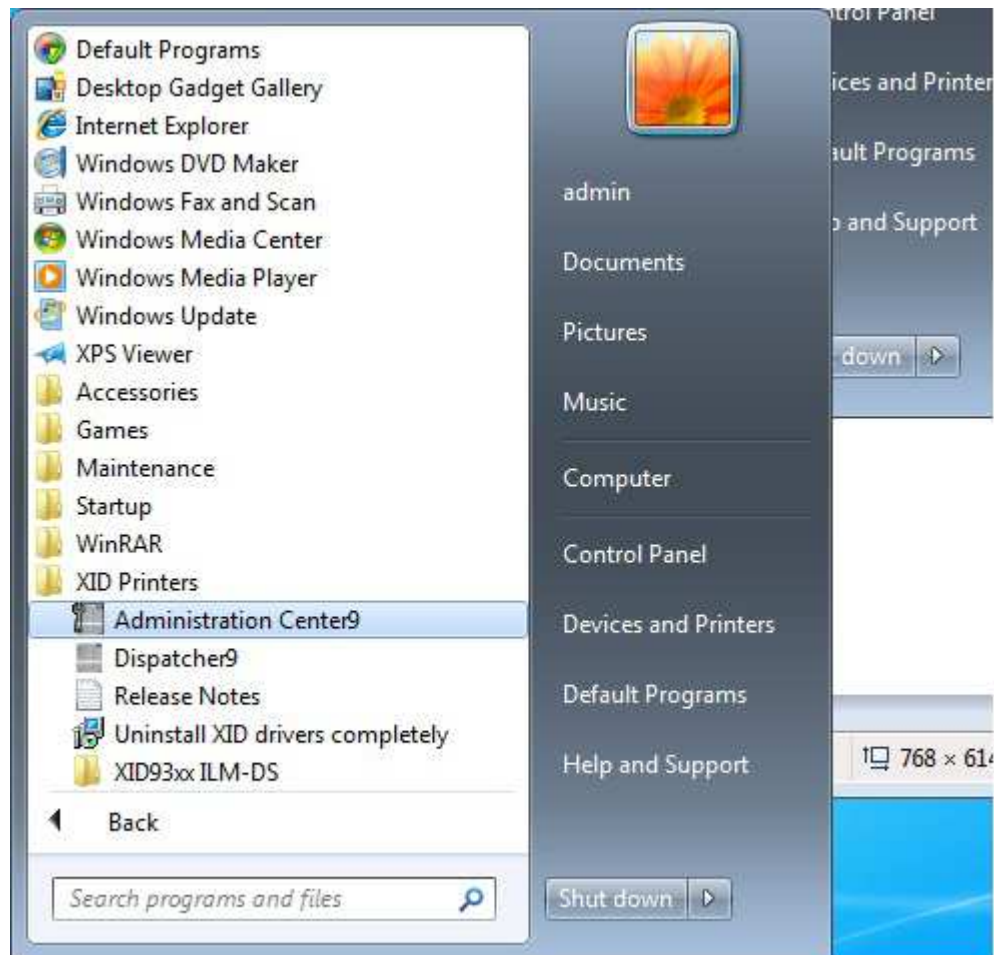




## 2 Administration Center

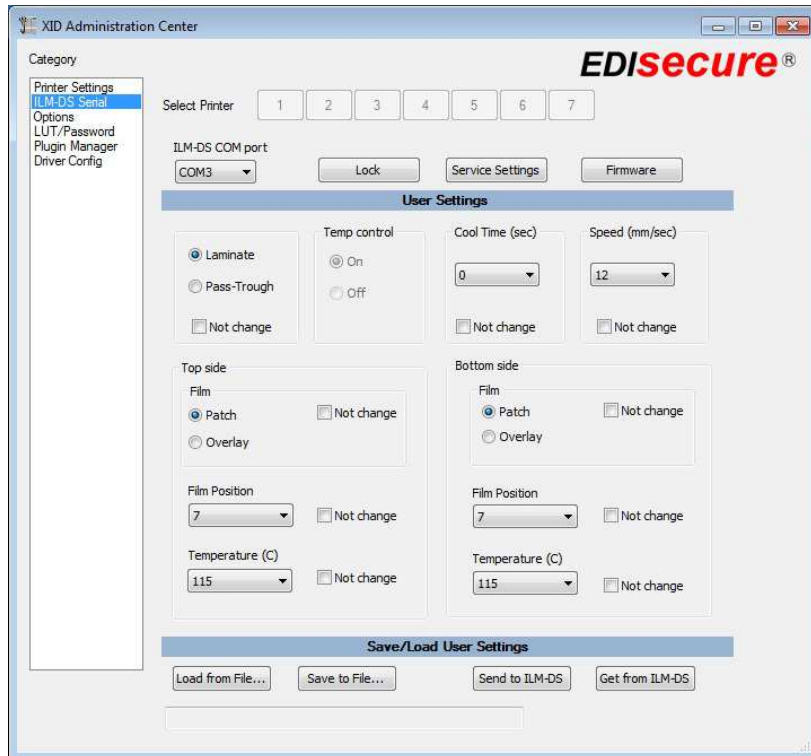
To setup the ILM-DS Module use the Administration Center.

You can easily start the Administration Center by clicking on “start” and selecting the folder “XID Printers” and then choosing the option “Administration Center”.



## 2.1 ILM-DS Settings

For the setting options of ILM-DS please select in the left column named Category the option “ILM DS Serial”



This screen offers you different setting options for the ILM-DS. In the last line you have also the option to save your current settings or to simply load already saved settings for recurring lamination tasks.

### ILM-DS COM Port

Please select the adequate COM Port your ILM-DS is connected with.

### Lock

By clicking this button the electronic lock of the ILM-DS gets activated. When the lock is activated the button displays “Unlock”, so you can unlock the ILM-DS by clicking the button again. While the lock is activated it is impossible to open the front door of the ILM, so the protection of the lamination material used is increased.

### Service Settings

With this option you open a new screen for the ILM-DS Service settings, for more information on these settings please see chapter 2.2 of this manual.

### Firmware

With this button you can start the firmware update, for detailed information on this option please see chapter 2.3 of this manual.

### Mode: Laminate, Pass

Set to [Laminate] to perform laminating.

Set to [Pass] if you do not want to laminate.

Please note: The settings you choose in the ILM DS Monitor Tool (see page 17 for detailed information) are the final valid ones.

Temp control

Sets temperature of heater during the laminator is waiting to guarantee a constant lamination process as the laminator only cools down when this option is set to "off", which would extend the total time for the print and lamination process.

Cool Time (sec)

Adjusts cooling time before lamination as the card should have a certain time period to cool down between the print and lamination process to ensure best lamination results.

Speed (mm/sec)

Adjusts the speed of card transportation.

Top side

Setting apply for T (Top = Upper) Film Cassette (Patch, Overlay)

Bottom side

Setting apply for B (Bottom = Lower) Film Cassette (Patch, Overlay)

Top side Film Position

Adjusts position of T (Top = Upper) Film Cassette (Patch, Overlay). For setting the patch position for the moving direction of the top side.

Top side Temperature

Adjusts temperature of heat roller on T (Top = Upper) Film Cassette (Patch, Overlay)

Bottom side Film Position

Adjusts position of B (Bottom = Lower) Film Cassette (Patch, Overlay). For setting the patch position for the moving direction of the bottom side.

Bottom side Temperature

Adjusts temperature of heat roller on B (Bottom = Lower) Film Cassette.

Load from File...

With this option you can load already saved lamination settings from your PC.

Save to File...

This option allows to save your current lamination settings, so you can easily re-use them by the above mentioned function "Load from file..."

Send to ILM-DS

This option allows to send your lamination settings directly to the ILM-DS.

Get from ILM-DS

With this button you can easily load lamination settings saved on your ILM-DS.

Checkbox "Not change"

When this checkbox is activated the default ILM-DS settings are used.

## 2.2 ILM-DS Lock

### Lock:

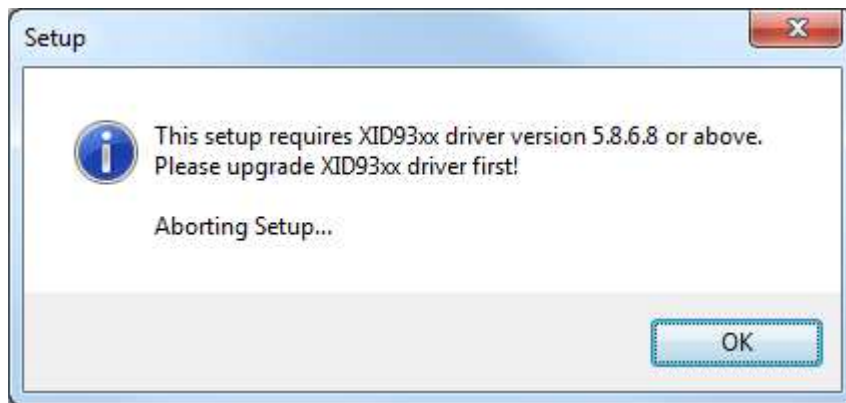
By clicking this button the electronic lock of the ILM-DS gets activated and you are asked to type in a password:

A Windows-style dialog box titled "New Password" with a close button (X) in the top right corner. It contains two text input fields: the first is labeled "Type new password" and the second is labeled "Retype new password". Below the fields are two buttons: "OK" and "Cancel".

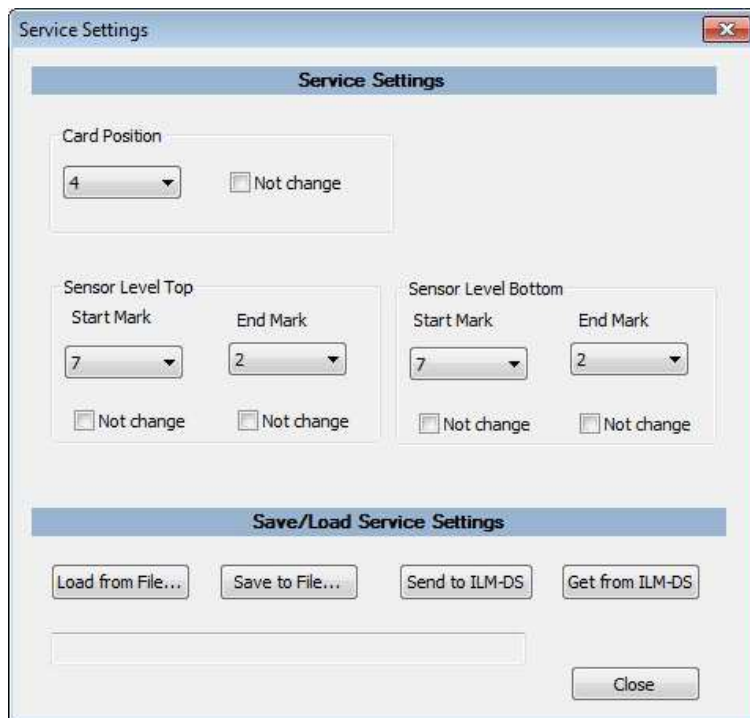
While the lock is activated it is impossible to open the front door of the ILM, so the protection of the lamination material used is increased.

When the lock is activated the button displays "Unlock", so you can unlock the ILM-DS by clicking the button again and retyping the password you set before.

A Windows-style dialog box titled "Enter Password" with a close button (X) in the top right corner. It contains a single text input field. To the right of the field are two buttons: "OK" and "Cancel".



## 2.3 ILM-DS Service Settings



### Card Position

Adjusts the position where the card is stopped before lamination.

### Sensor Level Top: Start Mark

Adjusts the film mark sensor on T (Top = Upper) Side Film.

### Sensor Level Top: End Mark

Adjusts the film end sensor mark on T (Top = Upper) Side Film.

### Sensor Level Bottom: Start Mark

Adjusts the film mark sensor on B (Bottom = Lower) Side Film.

### Sensor Level Bottom: End Mark

Adjusts the film end sensor mark on B (Bottom = Lower) Side Film.

### Load from File...

With this option you can load already saved lamination settings from your PC.

Save to File...

This option allows saving your current lamination settings, so you can easily re-use them by the above mentioned function "Load from file..."

Send to ILM-DS

This option allows sending your lamination settings directly to the ILM-DS.

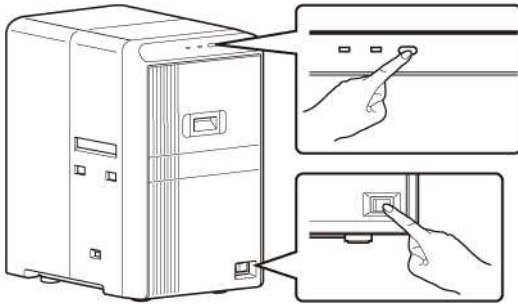
Get from ILM-DS

With this button you can easily load lamination settings saved on your ILM-DS.

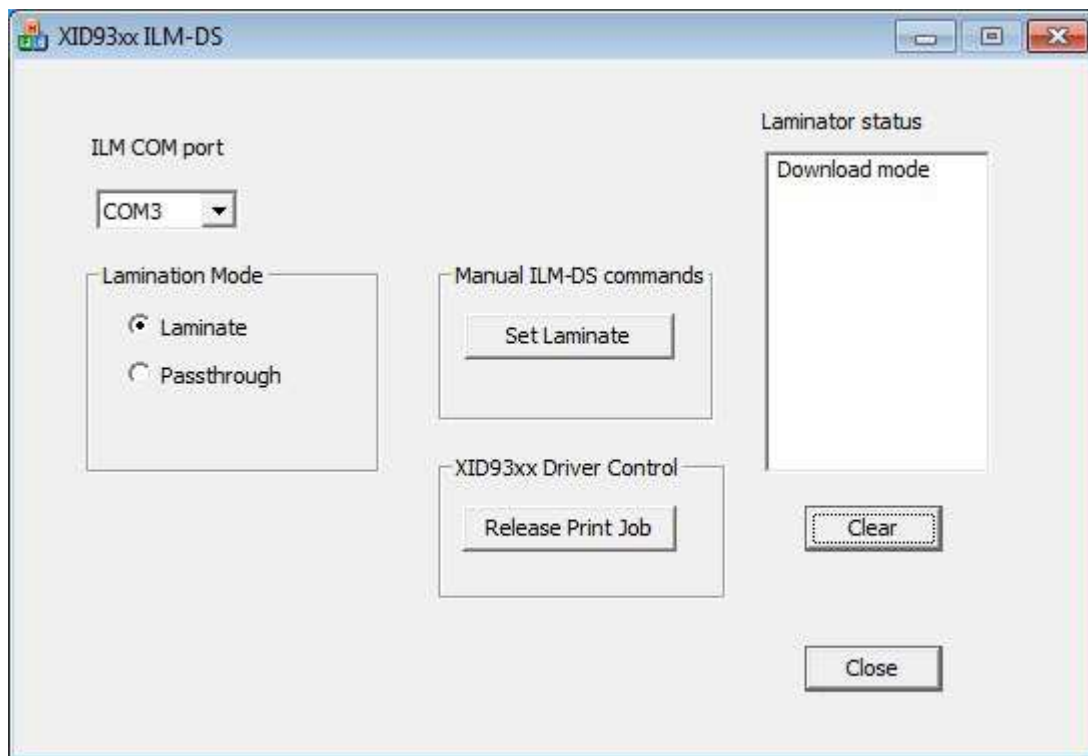
## 2.4 Firmware Update

Setting the laminator and card printer to download mode enables you to update the firmware for the laminator by using a PC through printer connection.

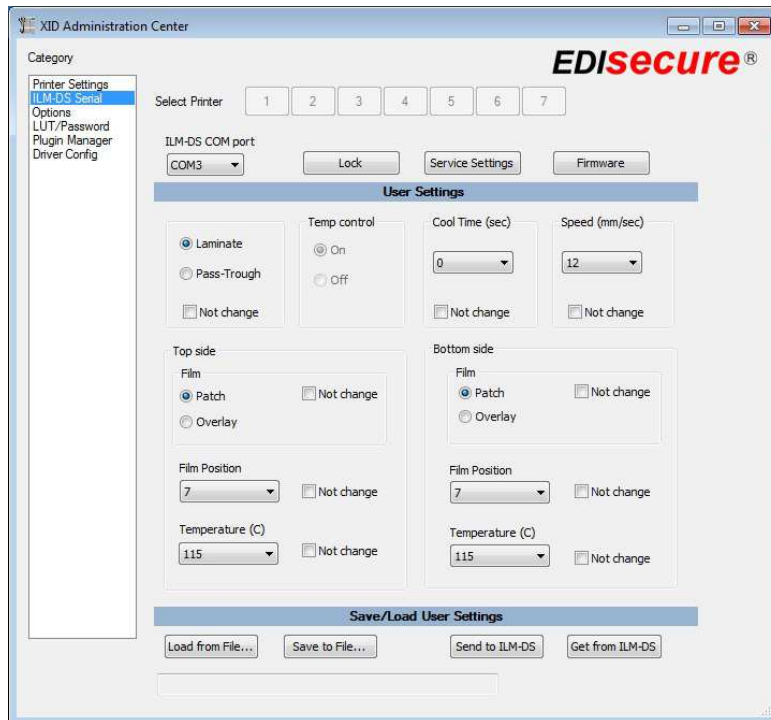
- 1 Press and hold down the operation button, and turn on the power at the same time. Both LED displays are lit.



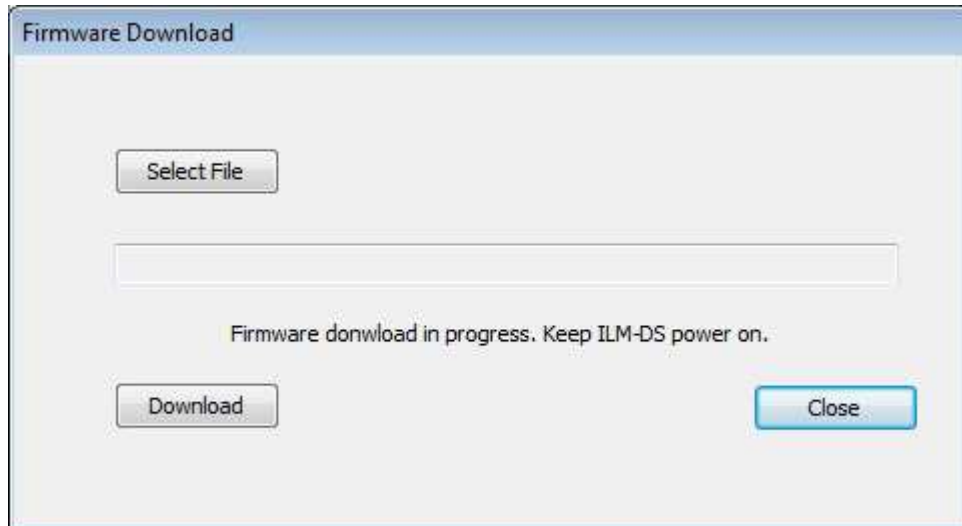
Please start the Monitor Tool (see Chapter 3 for detailed information) and choose the ComPort your ILM-DS is connected to and make sure that in the right column the option "Download mode" is selected.



Please start the Admin Center and click the button “Firmware”



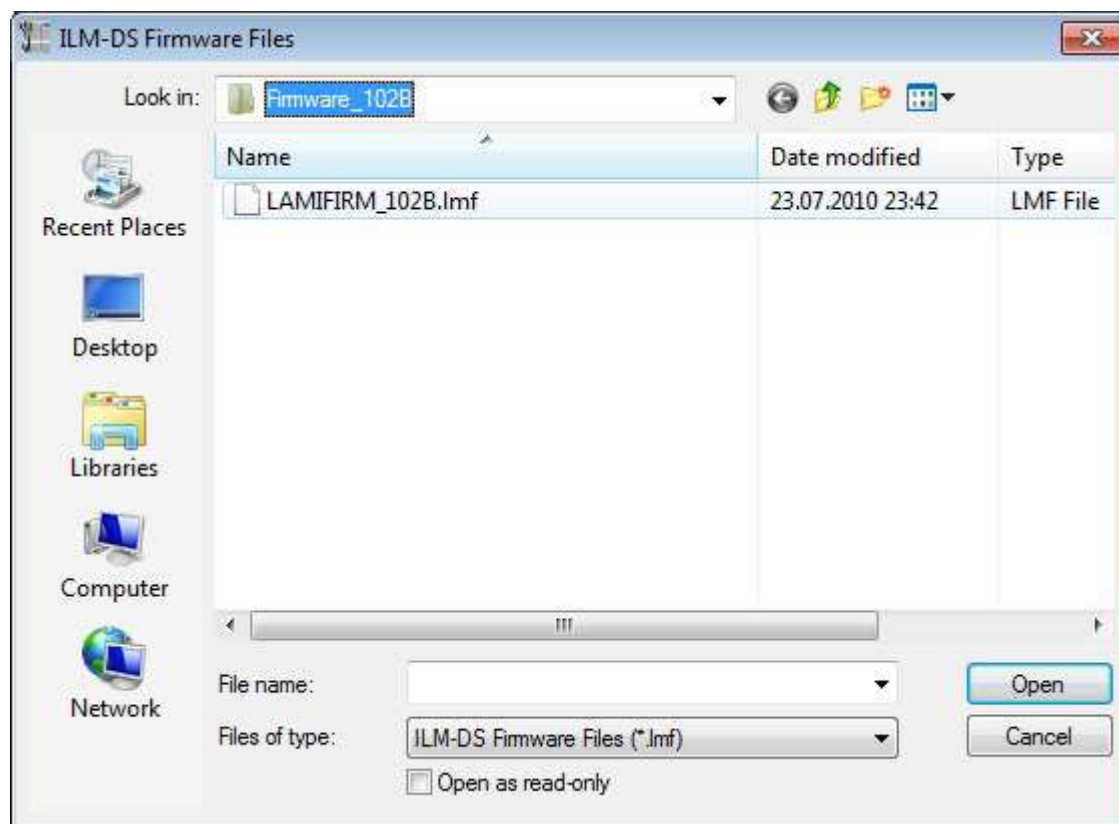
Now the following screen appears:



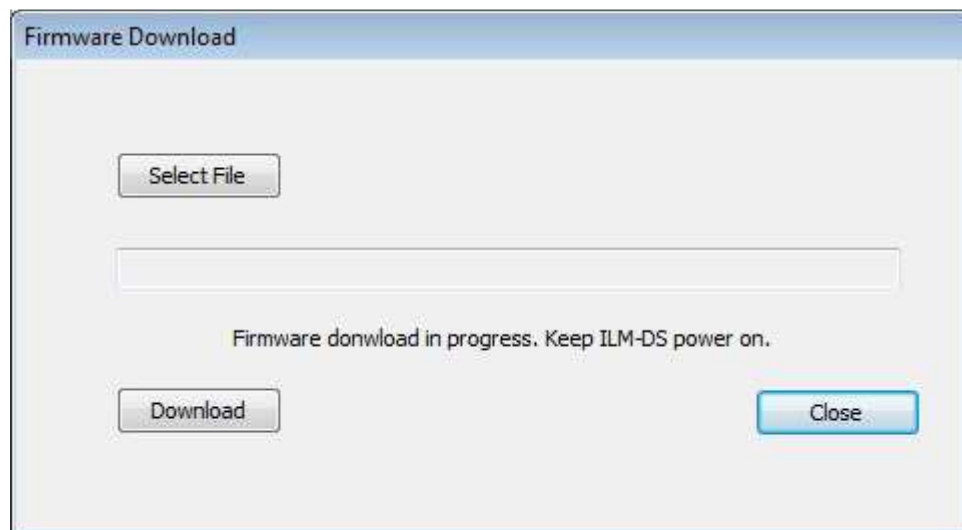
Please click the “Select File” Button



In the next screen please browse for the according file, mark it with a click and click the button “Open”.

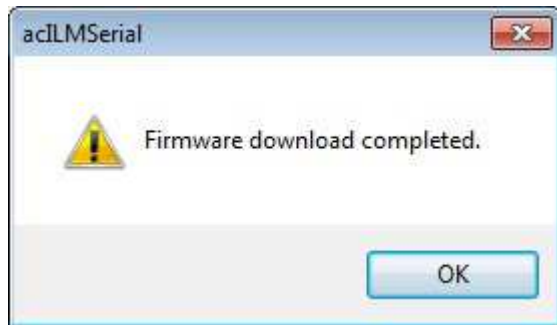


Again the following screen appears:



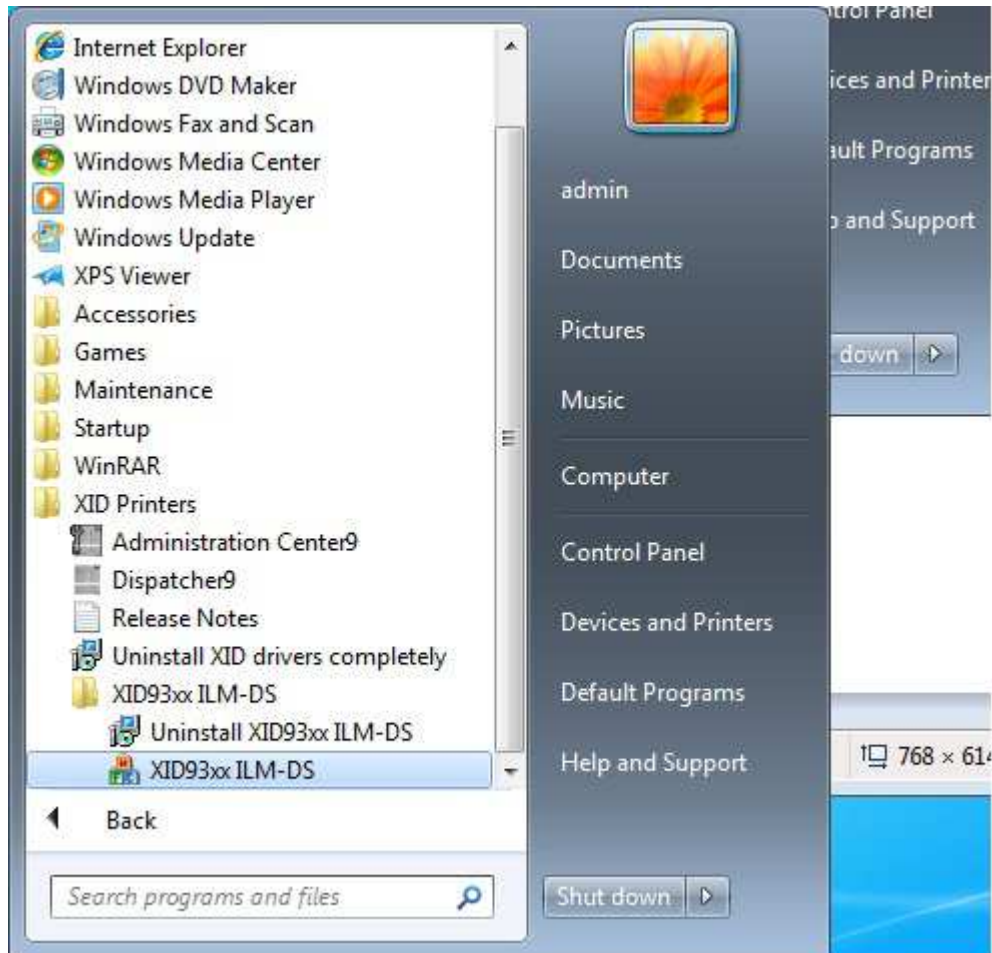
This time please click the “Download” button.

Now the firmware download routine starts, which can take up to 5 minutes time. When the process is through you will receive the following message:



### 3 Monitor Tool

The Monitor Tool starts automatically with the system start of your PC. In case you need to start it manually, you can easily do this by clicking on “start” and selecting the folder “XID93xx ILM-DS” and double click the tool which is also named “XID93xx ILM-DS”.



Once the Monitor tool is started you will see it as a small icon in your task bar:



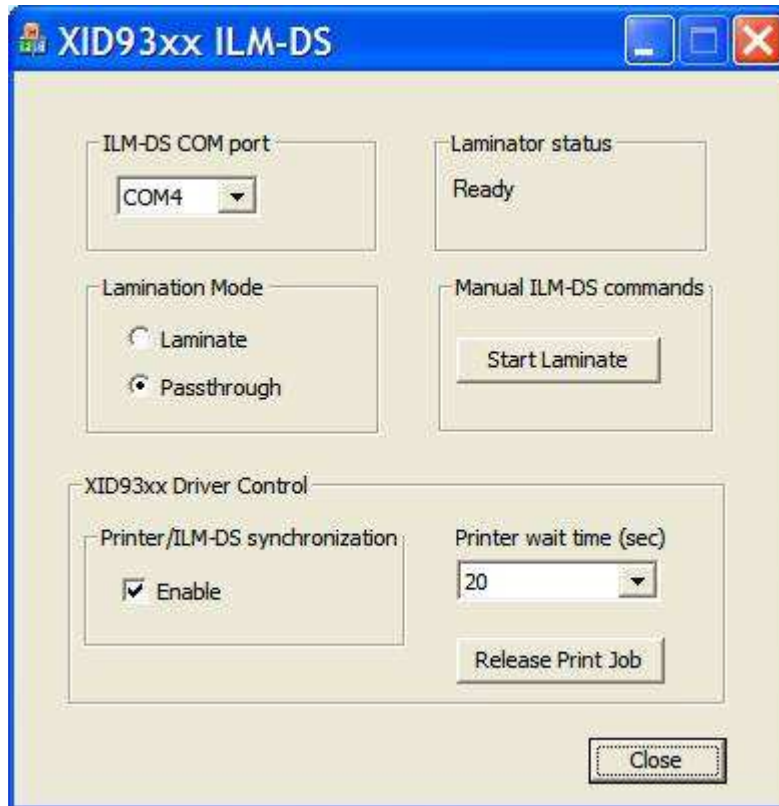
To open the Monitor Tool please right click the taskbar and click the option “Open ILM Monitor”.



Hide when minimized: this option hides the icon when the tool is minimized

Exit: please click this option to exit the Monitor Tool

### 3.1 Settings of the Monitor Tool



Lamination Mode: Laminate  
The ILM-DS will laminate the card

Lamination Mode: Passthrough  
The ILM-DS will not laminate the card

Start Laminate:  
Set laminator status to "laminate"

Release print job:  
Starts a print job from your connected XID 93xx printer.

Laminator status:  
Shows the current status of your ILM-DS. The following list shows all possible status options:

- Offline: ILM-DS is switched off or unplugged
- Ready: ILM-DS is ready for a new job
- Laminating: ILM-DS is in process to laminate a card
- Error: ILM-DS has an error a detailed error description is shown next to the error status
- In Heater Control Mode: ILM-DS is in Heater Control Mode (Standby mode)
- Initializing: ILM-DS is in process to initialize
- Preheating: ILM-DS is in process of preheating

XID 93xx Driver control – Printer/ILM-DS synchronization:  
When the option "enable" is activated the printer and the ILM-DS are used as a united device.

Printer wait time:

Sets the time in seconds how long it takes until the printer driver will show a “Time out” message if the ILM DS Monitor does not react on a laminate command.

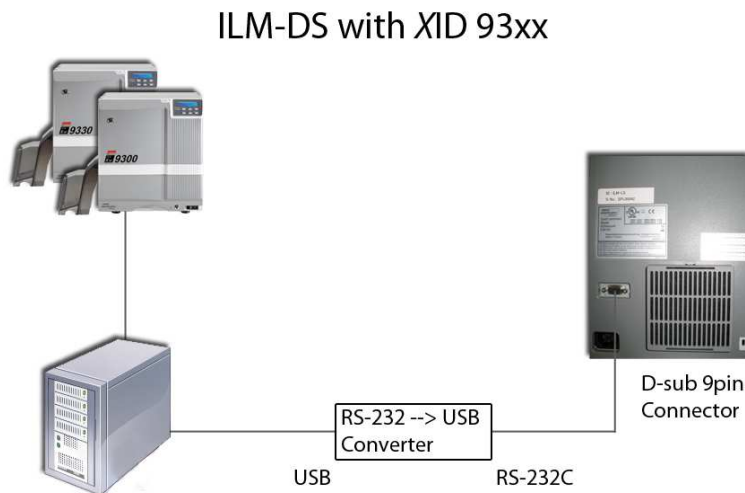
## 4 Print and lamination process

The application software spools every print job via normal Windows spooler. Then the dispatcher module of the printer driver fetches this spool job, manages the print queue and performs a normal print operation. Afterwards the ILM-DS starts the lamination process automatically as soon as a card is detected in the input section. The ILM-DS Monitor Tool for XID 93xx printers monitors the status during the lamination operation and sends status and error messages to the XID 93xx printer driver. In case of “busy” or “error” status in the laminator the XID 93xx printer driver stops the card before passing the retransfer section of the printer. As soon as the ILM-DS reports a ready status the XID 93xx printer driver continues with the retransfer process.

### 4.1 Specification

The ILM-DS Monitor Tool for XID 93xx Retransfer Printers is developed to do the ILM-DS configuration, job processing, error handling and job synchronization via a standalone application/driver on the host PC.

### 4.2 Hardware scheme



---

**Digital Identification Solutions AG**

Teckstrasse 52  
73734 Esslingen

**Germany**

Phone: + 49 711 341 689 - 0  
Fax: + 49 711 341 689 - 550  
Email: support@digital-identification.com

**Digital Identification Solutions Pte. Ltd.**

#03-01 Hiangkie Industrial Building IV  
27 Woodlands Industrial Park E1  
Singapore 757718

Phone: + 65 6352 8364  
Fax: + 65 6352 8365  
Email: support@sg.digital-identification.com

**Digital Identification Solutions (Beijing) Co. Ltd.**

Lonsdale Center C207, No. 5 Wanhong Road  
Chaoyang District, Beijing, 1 00015  
P.R. China

Phone: + 86 10 6437 4376  
Fax: + 86 10 6433 1278  
Email: support@cn.digital-identification.com

**Digital Identification Solutions LLC**

111 Kiowa Lane  
Piedmont, SC 29673  
United States of America

Phone: + 1 864 272 1199  
Fax: + 1 770 234 5798  
Email: support@us.digital-identification.com

**Digital Identification Solutions (Branch)**

Unit E-20, Dubai Airport Free Zone  
P.O. Box 5 46 68

**Dubai, United Arab Emirates**

Phone: + 971 4 299 4146  
Fax: + 971 4 299 4147  
Email: support@uae.digital-identification.com

**Digital Identification Solutions S. de R.L. de C.V.**

Parque Industrial Benito Juárez  
Acceso II, No. 5, Bodega No. 1  
Querétaro, Qro, C.P. 76130

**México**

Phone: + 52 442 2171 768 - 0  
Fax: + 52 442 2171 768 - 10  
Email: support@mx.digital-identification.com

**vps ID Systems GmbH**

Carl-Zeiss-Strasse 2  
76275 Ettlingen  
Germany

Phone: + 49 7243 5488 - 0  
Fax: + 49 7243 5488 - 11  
Email: info@vps.de

---

[www.digital-identification.com](http://www.digital-identification.com)